

CytoCORE[®] Lung Biopsy Case Study

Patient

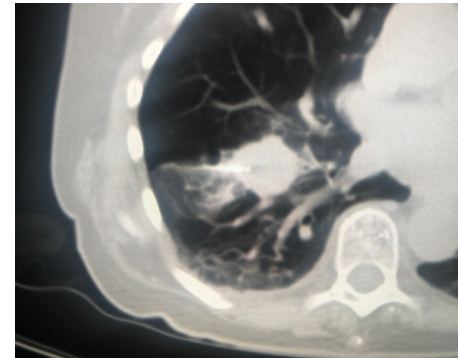
91 y/o female recently diagnosed diffuse large B-cell lymphoma on cervical lymph node core biopsy. An enlarging mass was identified in the right lower lobe measuring 2.6 cm. This mass was surrounded by vessels putting the patient at high risk for biopsy complications. The decision was made to use CytoCore fine needle biopsy device instead of a large gauge, firing core biopsy gun.

Procedure

A 22 gauge 15 cm length needle was attached to the CytoCore device. Using a co-axial introducer, the needle was advanced into the mass under CT guidance. Once in position suction was applied and the motor was activated. The needle was advanced in and out to collect small cores of tissue and fluid for cytology. The sample was then stained and ROSE assessment was performed by an on-site cytotechnologist. A second dedicated pass was performed for flow cytometry analysis.

Outcome

The first pass proved to be abundantly adequate for cytological assessment and the cell block for subsequent evaluation. The second pass was sent for flow cytometry. The patient received a confirmed diagnosis of B-cell lymphoma. Despite the high risk characterization of this mass, the patient had no complications and was discharged 1 hour after the procedure.



CT Image post biopsy

"Before CytoCore, I was faced with the decision of a near certain complication or an uncertain diagnosis for the patient. Now I have a solution that is minimally invasive and still provides pathology with the cellular material volume they require."