

# CarbonCase

## Product Advantages

Single handle on long or short axis to help carry and position the image receptor

Virtually indestructible, shock absorbent, glass-filled polypropylene frame

Curved corners and radiused edges don't catch on bed sheets or clothes for easy placement

Smooth, non-porous surfaces for effective cleaning and superior infection control

Simple Twin-Lock™ dual locking design for easy panel application and removal

Ergonomic handle to reduce fatigue and provide a sure grip

Shock absorbent corner bumpers and inserts for additional drop protection and perfect fit

Three configurations of tube side protection to meet your needs and budget

Fits all ANSI sized wireless DR panels and most tethered DR panels



The **CarbonCase™** family of accessories share similar attributes and features three unique tube side support specifications for grid encasements and mobile DR panel holders. Available in a variety of sizes and configurations including 24x30cm, 10x12in, 14x17in and 17x17in with handles on the long or short axis. The **CarbonMax** features an industry-leading 2.5mm carbon fiber tube side support that boasts a strength-to-weight ratio that make it the pound-for-pound world champion in detector protection. The **CarbonLite** showcases a performance-blended top plate including .5mm carbon fiber with a polycarbonate backing, yielding an affordable choice with remarkable protection. The **PolyCarbon** provides a rugged, extremely durable polycarbonate top plate while offering the most affordable price in the market today. Like all Reina Imaging detector holders, the **CarbonCase** product line provides superior protection for both your DR panel and the grid resulting in the **lowest lifetime cost of ownership** available today.



Simple Twin-Lock™

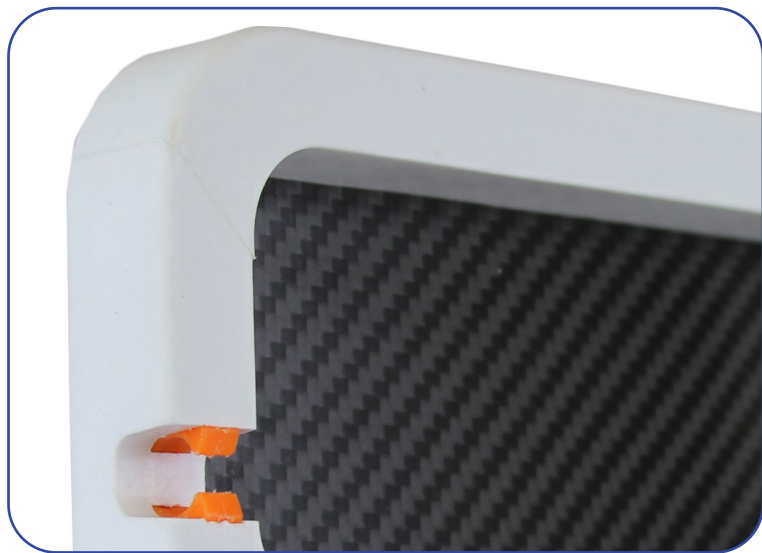
# Product Details



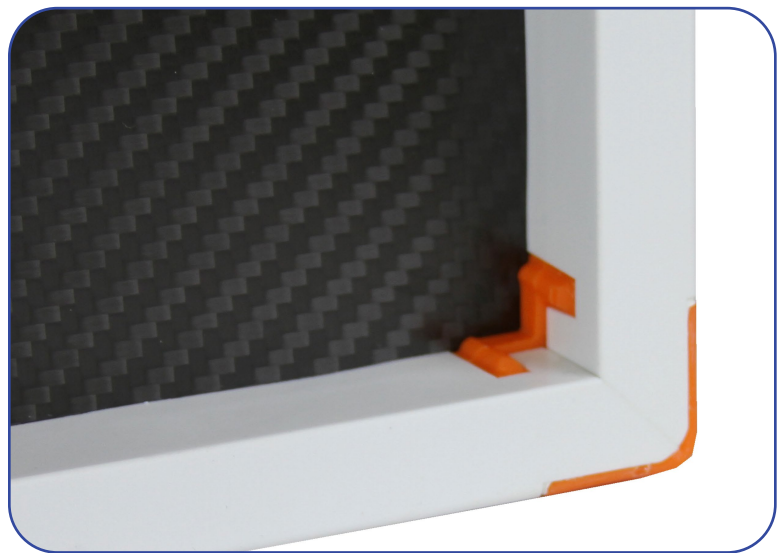
Tube Side



Rear Side



Curved Corners and Radiused Edges



Shock Absorbent Corner Bumpers

Product Code	Product Name	Dimensions (cm)	Weight (kg)
<b>17 x 17 Handle on Long Axis</b>			
CC217	17x17 CarbonMax Grid Encasement	56.42 x 49.22 x 2.69	1.76*
CC517	17x17 CarbonLite Grid Encasement	56.42 x 49.22 x 2.69	1.76*
CC17	17x17 PolyCarbon Grid Encasement	56.42 x 49.22 x 2.69	1.85*
CC2NG17	17x17 CarbonMax Mobile DR Panel Holder	56.42 x 49.22 x 2.69	1.76
CC5NG17	17x17 CarbonLite Mobile DR Panel Holder	56.42 x 49.22 x 2.69	1.76
CCNG17	17x17 PolyCarbon Mobile DR Panel Holder	56.42 x 49.22 x 2.69	1.85
<b>14 x 17 Handle on Long Axis</b>			
CC214	14x17 CarbonMax Grid Encasement	48.91 x 49.22 x 2.69	1.54*
CC514	14x17 CarbonLite Grid Encasement	48.91 x 49.22 x 2.69	1.58*
CC14	14x17 PolyCarbon Grid Encasement	48.91 x 49.22 x 2.69	1.67*
CC2NG14	14x17 CarbonMax Mobile DR Panel Holder	48.91 x 49.22 x 2.69	1.54
CC5NG14	14x17 CarbonLite Mobile DR Panel Holder	48.91 x 49.22 x 2.69	1.58
CCNG14	14x17 PolyCarbon Mobile DR Panel Holder	48.91 x 49.22 x 2.69	1.67
<b>10 x 12 Handle on Long Axis</b>			
CC210	10x12 CarbonMax Grid Encasement	38.47 x 36.54 x 2.69	1*
CC510	10x12 CarbonLite Grid Encasement	38.47 x 36.54 x 2.69	1*
CC10	10x12 PolyCarbon Grid Encasement	38.47 x 36.54 x 2.69	1.08*
CC2NG10	10x12 CarbonMax Mobile DR Panel Holder	38.47 x 36.54 x 2.69	1
CC5NG10	10x12 CarbonLite Mobile DR Panel Holder	38.47 x 36.54 x 2.69	1
CCNG10	10x12 PolyCarbon Mobile DR Panel Holder	38.47 x 36.54 x 2.69	1.08
<b>24 x 30 Handle on Long axis</b>			
CC224	24x30 CarbonMax Grid Encasement	38.47 x 36.54 x 2.69	1*
CC524	24x30 CarbonLite Grid Encasement	38.47 x 36.54 x 2.69	1*
CC24	24x30 PolyCarbon Grid Encasement	38.47 x 36.54 x 2.69	1.08*
CC2NG24	24x30 CarbonMax Mobile DR Panel Holder	38.47 x 36.54 x 2.69	1
CC5NG24	24x30 CarbonLite Mobile DR Panel Holder	38.47 x 36.54 x 2.69	1
CCNG24	24x30 PolyCarbon Mobile DR Panel Holder	38.47 x 36.54 x 2.69	1.08

\*Plus Selected Grid

**Reina**Imaging



XRAY CASSETTE REPAIR

Reimagine Radiography



[www.reinaimaging.com](http://www.reinaimaging.com)



800-752-4918



[customer\\_service@reinaimaging.com](mailto:customer_service@reinaimaging.com)