

# Quick Wire Catalog

*Storage Solutions for Healthcare*



**solaire**  
MEDICAL

# Quick Wire Catalog

## *Storage Solutions for Healthcare*

Wire shelving has long served as the backbone of open supply storage and transport across the hospital, from central supply, departmental storage rooms, and sterile processing/procedural areas to patient care settings.

Quick Wire open storage units offer a variety of solutions to meet the broad range of open storage/transport needs throughout dynamic healthcare environments. High-quality, high-strength units provide versatile, efficient storage for the specific supplies of departments as well as supply chain inventory across an entire hospital.

<b>Quick Wire Overview</b> .....	3
<b>Preconfigured Units</b> .....	5
Wire Shelving Units.....	5
Basket Shelving Units.....	7
Enclosed Units.....	8
Specialty Units.....	10
Utility Carts.....	12
<b>Build a Unit</b> .....	15
Shelves.....	16
Posts.....	20
Mobility.....	21
Enclosures.....	23
Accessories.....	25
<b>Quick Track System</b> .....	31

# Quick Wire Catalog

## *Storage Solutions for Healthcare*

Quick Wire products offer a range of storage solutions to target specific supplies and support process flow, helping staff work more efficiently and keeping supplies more organized.



### **Preconfigured Units**

Configured to support the most common storage scenarios, preconfigured stationary and mobile units in two heights are shipped for ready use with all the necessary components but can be further modified as needed.

Stationary units meet the broad needs of central supply areas and sterile processing departments. Dust-free design is ideal for supplies and equipment that are:

- Used widely throughout the hospital
- Housed in a centralized and/or fixed location
- Unlikely to be modified or changed

Mobile units support quick relocation of supplies and are ideal for supplies and equipment that are:

- Required to move throughout the facility
- Needed to support dynamic workflow environments
- Frequently changing or being rearranged



### **Build a Unit**

Accommodate the variation of quantities and sizes of supplies and equipment by providing flexibility solutions that address specific environment and workflow needs.

### **Quick Track System**

Quick Wire includes the Quick Track System, a solution for areas with space constraints that require maximum storage utilization. A high-density, moveable aisle approach offers condensed storage while still providing ready access to necessary supplies.

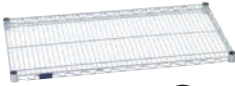
# Quick Wire Catalog

*Storage Solutions for Healthcare*

## Quick Wire Shelves

The Quick Wire line includes a number of shelf style choices to address different supplies, equipment, and storage locations.

### Standard Flat Wire Shelf



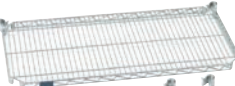
Great for basic storage needs, especially packaged goods. Open wire design minimizes dust accumulation. Available in chrome, anti-microbial, or stainless finish.

### Solid Galvanized or Stainless Steel Shelf



Great for solid shelving needs or as a solid bottom shelf. These shelves have raised edges, 18-gauge, dual-layer construction, and sturdy aluminum corner castings. Available in galvanized steel with clear epoxy coating or 304 stainless steel.

### Easy-Adjust Shelf



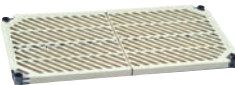
Allows middle shelves to be adjusted, added, or removed without disassembling the entire unit. Separate collars allow the shelf to be lifted off and then collars can be repositioned at the desired height. Available in chrome finish.

### Basket Shelf



Durable integrated collar keeps items enclosed securely in the basket shelf. Available in chrome finish.

### Plastic Mat Shelf



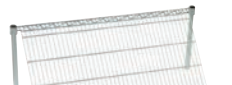
Optimal for use in sterile environments and areas where infection control is essential. The shelves' modular design allows for easy removal for thorough cleaning. The shelves' vented, open grid smooth surface has no sharp edges. An anti-microbial agent protects the finish from bacteria, mold, and mildew.

### Solid Plastic Shelf



Great as a solid bottom shelf when using plastic mat shelving, solid plastic shelves resist dents, chips, stains, and odors to maintain cleanliness. Raised edges prevent spills from overflowing.

### Gravity Feed Shelf



Designed with enhanced ergonomics for picking operations, gravity feed shelves allow critical supplies to slide to the foremost position, automatically replacing them when items are removed. Rear load/front pick promotes first-in/first-out stock rotation. Available in chrome finish.

## Quick Wire Finishes

Finish options allow you to fine-tune your Quick Wire products for aesthetic or functional considerations.

### Chrome Finish

The industry standard for economical dry, low-humidity storage, electroplated nickel chrome finish offers a hard, durable high-gloss finish. One-year limited warranty against rust and corrosion.

### Anti-Microbial Finish

The powder epoxy-coated finish with an Interpron AM silver ion anti-microbial agent protects against the bacteria, mold, and mildew that can cause staining, odor, or discoloration. The finish is similar in appearance to chrome, but withstands temperature extremes, and is suitable for dry storage, coolers, and freezers. Ten-year limited warranty against rust and corrosion.

### Stainless Steel Finish

Ideal for any storage situation, the electroplated 304 stainless steel finish provides the best protection against rust and corrosion and handles all moisture and temperature extremes. Lifetime limited warranty against rust and corrosion.

### Polymer Finish

Easy-to-clean, smooth surface finish won't scratch, chip, or dent. Anti-microbial agent protects finish against bacteria, mold, and mildew that can cause staining, odor, or discoloration and won't rust or corrode. One-year limited warranty against rust and corrosion.

## Preconfigured Units – Wire Shelving Units

### 4-Shelf Stationary Unit

Includes 4 chrome posts and 4 chrome wire shelves



#### 18"d shelves

SW182463S4S	24"w x 18"d x 63"h
SW183663S4S	36"w x 18"d x 63"h
SW184863S4S	48"w x 18"d x 63"h
SW186063S4S	60"w x 18"d x 63"h
SW187263S4S	72"w x 18"d x 63"h

#### 24"d shelves

SW242463S4S	24"w x 24"d x 63"h
SW243663S4S	36"w x 24"d x 63"h
SW244863S4S	48"w x 24"d x 63"h
SW246063S4S	60"w x 24"d x 63"h
SW247263S4S	72"w x 24"d x 63"h

SW182474S4S	24"w x 18"d x 74"h
SW183674S4S	36"w x 18"d x 74"h
SW184874S4S	48"w x 18"d x 74"h
SW186074S4S	60"w x 18"d x 74"h
SW187274S4S	72"w x 18"d x 74"h

SW242474S4S	24"w x 24"d x 74"h
SW243674S4S	36"w x 24"d x 74"h
SW244874S4S	48"w x 24"d x 74"h
SW246074S4S	60"w x 24"d x 74"h
SW247274S4S	72"w x 24"d x 74"h

### 5-Shelf Stationary Unit

Includes 4 chrome posts and 5 chrome wire shelves



#### 18"d shelves

SW182463S5S	24"w x 18"d x 63"h
SW183663S5S	36"w x 18"d x 63"h
SW184863S5S	48"w x 18"d x 63"h
SW186063S5S	60"w x 18"d x 63"h
SW187263S5S	72"w x 18"d x 63"h

#### 24"d shelves

SW242463S5S	24"w x 24"d x 63"h
SW243663S5S	36"w x 24"d x 63"h
SW244863S5S	48"w x 24"d x 63"h
SW246063S5S	60"w x 24"d x 63"h
SW247263S5S	72"w x 24"d x 63"h

SW182474S5S	24"w x 18"d x 74"h
SW183674S5S	36"w x 18"d x 74"h
SW184874S5S	48"w x 18"d x 74"h
SW186074S5S	60"w x 18"d x 74"h
SW187274S5S	72"w x 18"d x 74"h

SW242474S5S	24"w x 24"d x 74"h
SW243674S5S	36"w x 24"d x 74"h
SW244874S5S	48"w x 24"d x 74"h
SW246074S5S	60"w x 24"d x 74"h
SW247274S5S	72"w x 24"d x 74"h

### 5-Shelf Stationary Unit with Solid Bottom

Includes 4 chrome posts, 4 chrome wire shelves, and 1 solid galvanized shelf



Shown with optional casters and label holders

#### 18"d shelves

SW183674S5SSB	36"w x 18"d x 74"h
SW184874S5SSB	48"w x 18"d x 74"h
SW186074S5SSB	60"w x 18"d x 74"h

#### 24"d shelves

SW243674S5SSB	36"w x 24"d x 74"h
SW244874S5SSB	48"w x 24"d x 74"h
SW246074S5SSB	60"w x 24"d x 74"h



## Preconfigured Units – Wire Shelving Units

### 4-Shelf Mobile Unit

Includes 4 chrome posts, 4 chrome wire shelves, donut bumpers, and 5" polyurethane casters. Weight capacity: 1,200lbs



#### 18"d shelves

SW182469M4S	24"w x 18"d x 69"h
SW183669M4S	36"w x 18"d x 69"h
SW184869M4S	48"w x 18"d x 69"h
SW186069M4S	60"w x 18"d x 69"h
SW187269M4S	72"w x 18"d x 69"h

#### 24"d shelves

SW242469M4S	24"w x 24"d x 69"h
SW243669M4S	36"w x 24"d x 69"h
SW244869M4S	48"w x 24"d x 69"h
SW246069M4S	60"w x 24"d x 69"h
SW247269M4S	72"w x 24"d x 69"h

SW182480M4S	24"w x 18"d x 80"h
SW183680M4S	36"w x 18"d x 80"h
SW184880M4S	48"w x 18"d x 80"h
SW186080M4S	60"w x 18"d x 80"h
SW187280M4S	72"w x 18"d x 80"h

SW242480M4S	24"w x 24"d x 80"h
SW243680M4S	36"w x 24"d x 80"h
SW244880M4S	48"w x 24"d x 80"h
SW246080M4S	60"w x 24"d x 80"h
SW247280M4S	72"w x 24"d x 80"h

### 5-Shelf Mobile Unit

Includes 4 chrome posts, 5 chrome wire shelves, donut bumpers, and 5" polyurethane casters. Weight capacity: 1,200lbs



#### 18"d shelves

SW182469M5S	24"w x 18"d x 69"h
SW183669M5S	36"w x 18"d x 69"h
SW184869M5S	48"w x 18"d x 69"h
SW186069M5S	60"w x 18"d x 69"h
SW187269M5S	72"w x 18"d x 69"h

#### 24"d shelves

SW242469M5S	24"w x 24"d x 69"h
SW243669M5S	36"w x 24"d x 69"h
SW244869M5S	48"w x 24"d x 69"h
SW246069M5S	60"w x 24"d x 69"h
SW247269M5S	72"w x 24"d x 69"h

SW182480M5S	24"w x 18"d x 80"h
SW183680M5S	36"w x 18"d x 80"h
SW184880M5S	48"w x 18"d x 80"h
SW186080M5S	60"w x 18"d x 80"h
SW187280M5S	72"w x 18"d x 80"h

SW242480M5S	24"w x 24"d x 80"h
SW243680M5S	36"w x 24"d x 80"h
SW244880M5S	48"w x 24"d x 80"h
SW246080M5S	60"w x 24"d x 80"h
SW247280M5S	72"w x 24"d x 80"h

### 5-Shelf Mobile Unit with Solid Bottom

Includes 4 chrome posts, 4 chrome wire shelves, 1 solid galvanized shelf, donut bumpers, and 5" polyurethane casters. Weight capacity: 1,200lbs



#### 24"d shelves

SW243680M5SSB	36"w x 24"d x 80"h
SW244880M5SSB	48"w x 24"d x 80"h
SW246080M5SSB	60"w x 24"d x 80"h

## Preconfigured Units – Basket Shelving Units

### 5-Basket Stationary Unit

Includes 4 chrome posts, 1 chrome wire shelf (can be used at top or bottom), 5 chrome baskets with dividers, and 1 shelf mat. 36" w unit has 10 dividers; 48" w unit has 15 dividers



#### 18"d baskets

SW183674S5B	36" w x 18" d x 74" h
SW184874S5B	48" w x 18" d x 74" h

#### 24"d baskets

SW243674S5B	36" w x 24" d x 74" h
SW244874S5B	48" w x 24" d x 74" h

### 5-Basket Mobile Unit

Includes 4 chrome posts, 1 flat wire shelf (can be used at top or bottom), 5 chrome baskets with dividers, 1 shelf mat, and 5" polyurethane casters. 36" w unit has 10 dividers; 48" w unit has 15 dividers. Weight capacity: 1,200lbs



#### 18"d baskets

SW183680M5B	36" w x 18" d x 80" h
SW184880M5B	48" w x 18" d x 80" h

#### 24"d baskets

SW243680M5B	36" w x 24" d x 80" h
SW244880M5B	48" w x 24" d x 80" h

### 4-Basket Heavy-Duty Mobile Unit

Includes 4 chrome posts, 4 chrome baskets with 12 dividers, 2 wire shelves, dolly base with corner bumpers, and 5" polyurethane casters. Weight capacity: 1,200lbs



#### 24"d baskets

SW243669M4BHD	36" w x 24" d x 69" h
---------------	-----------------------

## Preconfigured Units – Enclosed Units

### Standard Enclosed Mobile Unit

Includes 4 chrome wire shelves, enclosure panels, 4 chrome posts, donut bumpers, 1 shelf mat, and 5" polyurethane casters. Weight capacity: 1,200lbs



Shown with additional shelf and optional label holders

#### 24"d shelves

SW243669ME	36"w x 24"d x 69"h
SW244869ME	48"w x 24"d x 69"h
SW246069ME	60"w x 24"d x 69"h

### Heavy-Duty Enclosed Mobile Unit

Includes 4 chrome wire shelves, enclosure panels, 4 chrome posts, 1 shelf mat, and dolly base with 5" polyurethane casters. Weight capacity: 1,200lbs



Shown with additional shelf and optional label holders and shelf dividers

#### 24"d shelves

SW243669MHE	36"w x 24"d x 69"h
SW244869MHE	48"w x 24"d x 69"h
SW246069MHE	60"w x 24"d x 69"h



## Preconfigured Units – Enclosed Units

### Standard Security Enclosed Mobile Unit

Includes 4 chrome posts, 2 chrome wire shelves, 2"-square side and back grid panels, lockable double doors, donut bumpers, and 5" polyurethane casters. Weight capacity: 1,200lbs



Shown with 1 optional shelf

#### 24"d shelves

SW243669MSE	36"w x 24"d x 69"h
-------------	--------------------

SW244869MSE	48"w x 24"d x 69"h
-------------	--------------------

SW246069MSE	60"w x 24"d x 69"h
-------------	--------------------

### Heavy-Duty Security Enclosed Mobile Unit

Includes 4 chrome posts, 2 chrome wire shelves, 2"-square side and back grid panels, lockable double doors, and dolly base with 6" molded rubber casters. Weight capacity: 1,200lbs



Shown with 2 optional shelves

#### 24"d shelves

SW243669MHSE	36"w x 24"d x 69"h
--------------	--------------------

SW244869MHSE	48"w x 24"d x 69"h
--------------	--------------------

SW246069MHSE	60"w x 24"d x 69"h
--------------	--------------------

### Mobile Linen Unit with Cover

Includes 4 chrome posts, 4 chrome shelves, 1 clear shelf mat, cart cover with Velcro closure, and 5" polyurethane casters (2 with locks). Cover protects supplies from dust, dirt, and contamination and theft and loss. Weight capacity: 1,200lbs



#### 24"d shelves

SW243669MLC	36"w x 24"d x 69"h
SW244869MLC	48"w x 24"d x 69"h
SW246069MLC	60"w x 24"d x 69"h

### Gravity Feed Mobile Unit

Includes 4 chrome posts, 4 gravity feed shelves with 8 ends/dividers, 1 flat wire shelf, 1 3-sided frame, donut bumpers, and 5" polyurethane casters. Gravity feed allows critical supplies to slide to the front position, automatically replacing an item when it is removed. Weight capacity: 1,200lbs



#### 18"d shelves

SW183669MGF	36"w x 18"d x 69"h
SW184869MGF	48"w x 18"d x 69"h

#### 24"d shelves

SW243669MGF	36"w x 24"d x 69"h
SW244869MGF	48"w x 24"d x 69"h

#### Dividers

SW18GFD	18"d divider
SW24GFD	24"d divider

### Mobile Sterile Wrap Unit

Includes 4 chrome posts, 1 chrome wire shelf, 2 3-sided frames, 2 support bar frames, 4 support bars, donut bumpers, and 5" polyurethane casters. Ergonomic design positions wrap at a height appropriate for easy access and allows quick and neat removal of one or several sheets as needed. Weight capacity: 1,200lbs



#### 24"d shelves

SW244869MSW	48"w x 24"d x 69"h
SW246069MSW	60"w x 24"d x 69"h

#### Additional support bars

SW48SB	48"w support bar
SW60SB	60"w support bar

### Mobile Catheter Procedure Unit

Includes 4 chrome posts, 2 chrome wire shelves, 1 3-sided frame, 2 angled support rails, 3 support bars, hooks, 7 label holders, donut bumpers, and 5" polyurethane casters. Holds catheters up to 58" long. 48"w unit comes with 32 hooks; 60"w unit comes with 40 hooks. Bins not included. Weight capacity: 1,200lbs



#### 24"d shelves

SW244869MC	48"w x 24"d x 69"h
SW246069MC	60"w x 24"d x 69"h

#### Options

SWCBH	Additional catheter hooks
SWCSB	Catheter side bar
SWFCB	Fogarty catheter basket
SWCSB	Catheter basket



Fogarty catheter basket



Catheter side bar  
(hooks not included)



Catheter hooks



Catheter basket

## Preconfigured Units – Utility Carts

### Solid Galvanized Utility Cart with 2 Shelves

Includes 2 utility handles, 2 solid galvanized shelves, and 5" polyurethane casters



SW183639MSU	36"w x 18"d x 39"h
-------------	--------------------

### Chrome Wire Utility Cart with 2 Shelves

Includes 2 utility handles, 2 chrome shelves, and 5" polyurethane casters



Shown with optional ledges

SW183639MWU	36"w x 18"d x 39"h
-------------	--------------------

### Solid Plastic Utility Cart with 2 Shelves

Includes 2 utility handles, 2 solid plastic shelves, and 5" polyurethane casters



SW183639MPU	36"w x 18"d x 39"
-------------	-------------------

## Preconfigured Units – Utility Carts

### Solid Stainless Steel Utility Cart with 2 Shelves

Includes 2 utility handles, 2 solid stainless steel shelves, and 5" polyurethane casters



SW183639MSSU 36"w x 18"d x 39"h

### Basket Cart

Has 1" tubular frame, chrome finish, and 18-gauge steel. Accommodates letter- or legal-sized hanging file folders



SW243338MB 33"w x 24"d x 38"h

### Stainless Steel Utility Cart

Includes 20-gauge shelves, 16-gauge uprights, 12" clearance between shelves, push handle, and 4" swivel non-marring rubber casters (2 with brakes)



SW152433MSSU 24"w x 15"d x 33"h



### Tote Box Cart

Includes 4 chrome posts, 2 24" d x 21" w chrome shelves, donut bumpers, adjustable slides to hold tote bins, polymer tote bins, and 5" polyurethane casters (2 with brakes).  
Weight capacity: 1,200lbs



#### 4-level and 7-level tote bin units

SW242148MTB	21" w x 24" d x 48" h, 4-level
SW242169MTB	21" w x 24" d x 69" h, 7-level

#### Accessories

SWPS	Extra slides, pair of 2
SWTB	17" w x 22" d x 6" h extra tote bin
SWSD	Short divider
SWLD	Long divider
SW2421CWS	21" w x 24" d chrome wire shelf
SW42CP	42" h chrome post

## Step 1:

Select shelf type and size

- Chrome
- Anti-microbial
- Stainless steel
- Easy-adjust
- Basket
- Gravity feed
- Solid steel
- Plastic mat
- Solid plastic

## Step 2:

Select post type and size

- Chrome
- Anti-microbial
- Solid stainless

## Step 3:

Select casters for mobile units

- Dolly base
- Plate casters
- Stem casters

## Step 4:

Select enclosure options

- Enclosure panel
- Cart cover

## Step 5:

Select accessory options

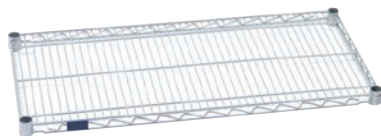
- Tray slides
- Shelf dividers
- Shelf ledges
- Coat racks
- Hanger rails
- Frames
- Shelf mats
- Cart handles
- Attachment pieces
- Levelers and foot plates
- Label and document holders

## Build a Unit – Step 1: Select shelf type and size

### Flat Wire Shelves

#### Chrome Shelf

Electro-plated nickel chrome with high gloss finish. Ideal shelf for dry storage. 30" d and 36" d shelves ideal for inventory pick locations that require bulk storage



#### 18"d

SW1824WSC	24" w x 18" d
SW1836WSC	36" w x 18" d
SW1848WSC	48" w x 18" d
SW1860WSC	60" w x 18" d
SW1872WSC	72" w x 18" d

#### 24"d

SW2424WSC	24" w x 24" d
SW2436WSC	36" w x 24" d
SW2448WSC	48" w x 24" d
SW2460WSC	60" w x 24" d
SW2472WSC	72" w x 24" d

#### 30"d

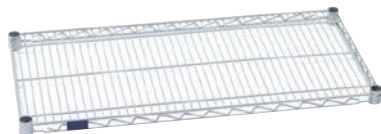
SW3036WSC	36" w x 30" d
SW3048WSC	48" w x 30" d
SW3060WSC	60" w x 30" d
SW3072WSC	72" w x 30" d

#### 36"d

SW3636WSC	36" w x 36" d
SW3648WSC	48" w x 36" d
SW3660WSC	60" w x 36" d
SW3672WSC	72" w x 36" d

#### Anti-Microbial Shelf

Epoxy coating has appearance of chrome but includes an anti-microbial agent that protects coating from bacteria, mold, and mildew. Ideal for dry and cold storage. NSF certified



#### 18"d

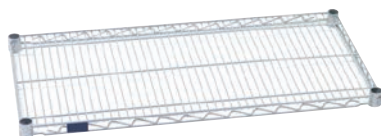
SW1824WSA	24" w x 18" d
SW1836WSA	36" w x 18" d
SW1848WSA	48" w x 18" d
SW1860WSA	60" w x 18" d
SW1872WSA	72" w x 18" d

#### 24"d

SW2424WSA	24" w x 24" d
SW2436WSA	36" w x 24" d
SW2448WSA	48" w x 24" d
SW2460WSA	60" w x 24" d
SW2472WSA	72" w x 24" d

#### Stainless Steel Shelf

Ideal for all environments, stainless steel is the shelf material option most resistant to rust and corrosion. Load capacity: 800lbs for 36" w and 48" w shelves; 600lbs for 60" w and 72" w shelves



#### 18"d

SW1836WSS	36" w x 18" d
SW1848WSS	48" w x 18" d
SW1860WSS	60" w x 18" d
SW1872WSS	72" w x 18" d

#### 24"d

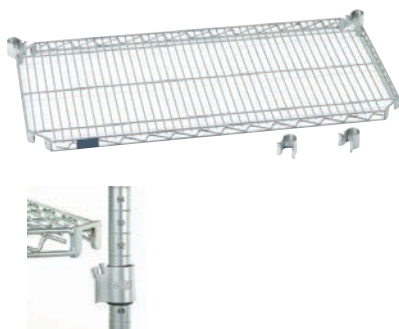
SW2436WSS	36" w x 24" d
SW2448WSS	48" w x 24" d
SW2460WSS	60" w x 24" d
SW2472WSS	72" w x 24" d

# QUICK! WIRE

## Build a Unit – Step 1: Select shelf type and size

### Easy-Adjust Shelf

Separate collar hooks allow shelves to be added, removed, and adjusted easily without disassembling entire unit. Shelf has chrome finish. NSF certified. Load capacity: 400lbs



#### 18"d

SW1836EZ	36"w x 18"d
SW1848EZ	48"w x 18"d
SW1860EZ	60"w x 18"d
SW1872EZ	72"w x 18"d

#### 24"d

SW2436EZ	36"w x 24"d
SW2448EZ	48"w x 24"d
SW2460EZ	60"w x 24"d
SW2472EZ	72"w x 24"d

### Basket Shelf and Divider

Collar welded onto basket for greater stability. Ideal for bulk, loose, or heavy items. Back of basket is 10"h and front is 7"h. Load capacity: 400lbs



#### 18"d

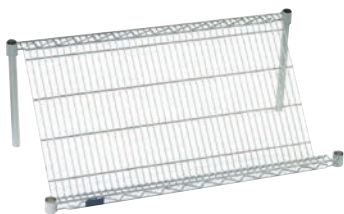
SW1836BS	36"w x 18"d x 10"h
SW1848BS	48"w x 18"d x 10"h
SW18BD	18"d divider

#### 24"d

SW2436BS	36"w x 24"d x 10"h
SW2448BS	48"w x 24"d x 10"h
SW24BD	24"d divider

### Gravity Feed Shelf and Divider

Angled shelf allows gravity feed. Divider/side sold separately. NSF certified. Load capacity: 400lbs



#### 18"d

SW1836GFS	36"w x 18"d
SW1848GFS	48"w x 18"d
SW18GFD	18"d divider/side

#### 24"d

SW2436GFS	36"w x 24"d
SW2448GFS	48"w x 24"d
SW24GFD	24"d divider/side

## Build a Unit – Step 1: Select shelf type and size

### Solid Shelf and Accessories

18-gauge stainless or galvanized steel. NSF certified. Load capacity: 400lbs-600lbs



#### Solid galvanized

SW1836SGS	36" w x 18" d
SW1848SGS	48" w x 18" d
SW1860SGS	60" w x 18" d
SW1872SGS	72" w x 18" d

#### Solid stainless steel

SW1836SSS	36" w x 18" d
SW1848SSS	48" w x 18" d

SW2436SGS	36" w x 24" d
SW2448SGS	48" w x 24" d
SW2460SGS	60" w x 24" d
SW2472SGS	72" w x 24" d

SW2436SSS	36" w x 24" d
SW2448SSS	48" w x 24" d

#### Solid shelf ledge, chrome

SW18LC	18" w
SW24LC	24" w
SW36LC	36" w
SW48LC	48" w
SW60LC	60" w
SW72LC	72" w

#### Solid shelf divider, chrome

SW18DC	18" d
SW24DC	24" d

#### Solid shelf rod and clips, chrome

SW52R	52" h rod
SW60R	60" h rod
SW72R	72" h rod
SW86R	86" h rod
SWSRC	extra clips



# QUICK! WIRE

## Build a Unit – Step 1: Select shelf type and size

### Plastic Mat Shelf and Accessories

Includes a sturdy 4-sided frame and removable plastic mat shelf with anti-microbial agent that protects the finish from bacteria, mold, and mildew. Shelf mat has smooth surface with no sharp edges and can be easily removed for cleaning. Will not dent, rust, chip, or corrode. Use with chrome, anti-microbial, or stainless steel posts. NSF certified. Load capacity: 400lbs



#### 18"d

SW1848PMS	48"w x 18"d
SW1860PMS	60"w x 18"d
SW1872PMS	72"w x 18"d

#### 24"d

SW2436PMS	36"w x 24"d
SW2448PMS	48"w x 24"d
SW2460PMS	60"w x 24"d
SW2472PMS	72"w x 24"d

#### Shelf ledge

SW18LP	18"w x 4"h
SW24LP	24"w x 4"h
SW36LP	36"w x 4"h
SW48LP	48"w x 4"h
SW60LP	60"w x 4"h
SW72LP	72"w x 4"h

#### Shelf divider

SW18SDP	18"d x 8"h
SW24SDP	24"d x 8"h

#### Label holder

SWLHP	3"w
-------	-----

### Solid Plastic Shelf

Durable, rust- and stain-resistant solid plastic shelf has raised edges to prevent spills from overflowing. Load capacity: 300lbs



#### 18"d

SW1836PS	36"w x 18"d
----------	-------------

#### 24"d

SW2448PS	48"w x 24"d
----------	-------------

## Build a Unit – Step 2: Select post type and size

### Post

1" diameter chrome post is grooved and numbered; shelves adjust in 1" increments. Includes separate insert with floor leveler and plastic glide. NSF certified



#### Chrome

SW14PC	14"h
SW34PC	34"h
SW54PC	54"h
SW63PC	63"h
SW74PC	74"h
SW86PC	86"h

### Post

1" diameter anti-microbial post is grooved and numbered; shelves adjust in 1" increments. Includes separate insert with floor leveler and plastic glide. NSF certified



#### Anti-microbial

SW14PA	14"h
SW34PA	34"h
SW54PA	54"h
SW63PA	63"h
SW74PA	74"h
SW86PA	86"h

### Post

1" diameter stainless steel post is grooved and numbered; shelves adjust in 1" increments. Includes separate insert with floor leveler and plastic glide. NSF certified



#### Stainless steel

SW63PS	63"h
SW74PS	74"h
SW86PS	86"h

## Build a Unit – Step 3: Select casters for mobile units

### Dolly Base Kit

Includes 5" polyurethane plate casters; 2 with brakes



#### For 18"d shelf

SW1836DB	36"w x 18"d
SW1848DB	48"w x 18"d
SW1860DB	60"w x 18"d

#### For 24"d shelf

SW2436DB	36"w x 24"d
SW2448DB	48"w x 24"d
SW2460DB	60"w x 24"d

### Dolly Frame Only

Durable formed steel with chrome-plated finish and corner bumpers. Plate caster sold separately



#### For 18"d shelf

SW1836DF	36"w x 18"d
SW1848DF	48"w x 18"d
SW1860DF	60"w x 18"d

#### For 24"d shelf

SW2436DF	36"w x 24"d
SW2448DF	48"w x 24"d
SW2460DF	60"w x 24"d

## Build a Unit – Step 3: Select casters for mobile units

### Plate Caster

5" polyurethane caster has a 250lb capacity; 6" rubber caster has a 500lb capacity; 8" pneumatic caster has a 300lb per caster load capacity



#### 5" polyurethane

SW5PCS	5" swivel
SW5PCB	5" swivel with brake
SW5PCR	5" rigid

#### 6" rubber

SW6PCS	6" swivel
SW6PCR	6" rigid

#### 8" pneumatic

SW8PCS	8" swivel
SW8PCR	8" rigid

### Stem Caster

5" polyurethane caster has zinc-plated housing and includes donut bumper. Set of 4 casters; 2 have brakes. Caster has a 300lb per caster load capacity



#### Polyurethane

SW5SCS	Set of 4 5" polyurethane casters
SWDB	Replacement donut bumper – 3½" diameter

### Stem Casters

5" polyurethane caster has stainless steel housing and includes donut bumper. Set of 4 casters; 2 have brakes. Caster has a 300lb per caster load capacity



#### Stainless steel

SW5SCSS	Set of 4 stainless steel 5" casters
---------	-------------------------------------

## Build a Unit – Step 4: Select enclosure options

### Enclosure Panel

Chrome enclosure panel prevents supplies from falling off the back or sides of a unit. Panel attaches easily to shelves without hardware. Includes joining clips to secure panels to each other. Solid shelves cannot be used with enclosure panels.



#### 50"h (for 54"h posts)

SW1854EP	12"d x 50"h side panel, fits 18"d shelf
SW2454EP	18"d x 50"h side panel, fits 24"d shelf
SW3654EP	30"d x 50"h back panel (includes 1 12"w x 50"h panel and 1 18"w x 50"h panel)
SW4854EP	42"d x 50"h back panel (includes 2 12"w x 50"h panels and 2 18"w x 50"h panels)
SW6054EP	54"d x 50"h back panel (includes 3 18"w x 50"h panels)
SW7254EP	66"d x 50"h back panel (includes 1 12"w x 50"h panel and 3 18"w x 50"h panels)

#### 60"h (for 63"h posts)

SW1863EP	12"d x 60"h side panel, fits 18"d shelf
SW2463EP	18"d x 60"h side panel, fits 24"d shelf
SW3663EP	30"d x 60"h back panel (includes 1 12"w x 60"h panel and 1 18"w x 60"h panel)
SW4863EP	42"d x 60"h back panel (includes 2 12"w x 60"h panels and 2 18"w x 60"h panels)
SW6063EP	54"d x 60"h back panel (includes 3 18"w x 60"h panels)
SW7263EP	66"d x 60"h back panel (includes 1 12"w x 60"h panel and 3 18"w x 60"h panels)

#### 70"h (for 74"h posts)

SW1874EP	12"d x 70"h side panel, fits 18"d shelf
SW2474EP	18"d x 70"h side panel, fits 24"d shelf
SW3674EP	30"d x 70"h back panel (includes 1 12"w x 70"h panel and 1 18"w x 70"h panel)
SW4874EP	42"d x 70"h back panel (includes 2 12"w x 70"h panels and 1 18"w x 70"h panel)
SW6074EP	54"d x 70"h back panel (includes 3 18"w x 70"h panels)
SW7274EP	66"d x 70"h back panel (includes 1 12"w x 70" h panel and 3 18"w x 70"h panels)



## Build a Unit – Step 4: Select enclosure options

### Cart Cover

Blue 400 denier nylon cover has Velcro closures, reinforced corners, and double stitching. More colors available upon request



#### 63"h

SW183663CBL	36"w x 18"d x 63"h
SW184863CBL	48"w x 18"d x 63"h
SW186063CBL	60"w x 18"d x 63"h
SW187263CBL	72"w x 18"d x 63"h

SW243663CBL	36"w x 24"d x 63"h
SW244863CBL	48"w x 24"d x 63"h
SW246063CBL	60"w x 24"d x 63"h
SW247263CBL	72"w x 24"d x 63"h

#### 74"h

SW183674CBL	36"w x 18"d x 74"h
SW184874CBL	48"w x 18"d x 74"h
SW186074CBL	60"w x 18"d x 74"h
SW187274CBL	72"w x 18"d x 74"h

SW243674CBL	36"w x 24"d x 74"h
SW244874CBL	48"w x 24"d x 74"h
SW246074CBL	60"w x 24"d x 74"h
SW247274CBL	72"w x 24"d x 74"h

### Cart Cover

10-gauge clear vinyl with zipper



#### 63"h

SW183663CCL	36"w x 18"d x 63"h
SW184863CCL	48"w x 18"d x 63"h
SW186063CCL	60"w x 18"d x 63"h
SW187263CCL	72"w x 18"d x 63"h

SW243663CCL	36"w x 24"d x 63"h
SW244863CCL	48"w x 24"d x 63"h
SW246063CCL	60"w x 24"d x 63"h
SW247263CCL	72"w x 24"d x 63"h

#### 74"h

SW183674CCL	36"w x 18"d x 74"h
SW184874CCL	48"w x 18"d x 74"h
SW186074CCL	60"w x 18"d x 74"h
SW187274CCL	72"w x 18"d x 74"h

SW243674CCL	36"w x 24"d x 74"h
SW244874CCL	48"w x 24"d x 74"h
SW246074CCL	60"w x 24"d x 74"h
SW247274CCL	72"w x 24"d x 74"h

### Shelf Divider



#### 8"h, chrome

SW18SD	18"d x 8"h
SW24SD	24"d x 8"h
SW30SD	30"d x 8"h
SW36SD	36"d x 8"h

### Shelf Ledger

Stackable



#### 4"h, chrome

SW18SL	18"d x 4"h
SW24SL	24"d x 4"h
SW30SL	30"d x 4"h
SW36SL	36"d x 4"h
SW48SL	48"d x 4"h
SW60SL	60"d x 4"h
SW72SL	72"d x 4"h

### Coat Rack Rod Kit



SW36CR	36"w
SW48CR	48"w
SW60CR	60"w

### Hanger Rail

Use for support or to hang items



SW18HR	18"w
SW24HR	24"w
SW36HR	36"w
SW48HR	48"w
SW60HR	60"w
SW72HR	72"w

### 3-Sided Frame



SW1836F	36"w x 18"d
SW1848F	48"w x 18"d
SW1860F	60"w x 18"d
SW2436F	36"w x 24"d
SW2448F	48"w x 24"d
SW2460F	60"w x 24"d

## Build a Unit – Step 5: Select accessory options

### Clear Shelf Mat

.035 plastic sheet. For other shelf sizes, select the next larger size and trim the mat to fit



#### 18"d

SW1836SM	36"w x 18"d
SW1848SM	48"w x 18"d
SW1860SM	60"w x 18"d
SW1872SM	72"w x 18"d

#### 24"d

SW2436SM	36"w x 24"d
SW2448SM	48"w x 24"d
SW2460SM	60"w x 24"d
SW2472SM	72"w x 24"d

### Utility Handle

Use with wire shelves, plastic mat shelves, solid plastic, solid galvanized, or solid stainless steel shelves



#### 18"d

SW18UH	18"d x 33"h
--------	-------------

#### 24"d

SW24UH	24"d x 33"h
--------	-------------

### Push Handle



#### 18"d

SW18PH	18"d
--------	------

#### 24"d

SW24PH	24"d
--------	------

## Build a Unit – Step 5: Select accessory options

### Post Joining Clamp

Sold individually



SWPC

### S Hook

To make add-on unit, use 2 hooks per shelf, pack of 12 hooks



SWSH

### Replacement Sleeve

Set of 4



SWRS

### Aluminum Shelf Clip with Retainer Ring

For use in high-temp, long or outdoor transport, or conductive situations. Set of 4



SWSC



## **Build a Unit** – Step 5: Select accessory options

### **Post Leveler and Insert**

Sold individually



SWPL

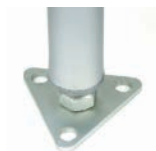
### **Leveler Glide**

Fits over post leveler. Set of 4



SWLG

### **Foot Plate**



SWFP

## **Build a Unit – Step 5:** Select accessory options

### **Locking Label Holder**

Sold individually



SWLH
------

### **Shelf Label Holder**



SW3LH	3"w, black
SW24LH	24"w, clear

### **Document Holder**

Sold individually



SWDH
------

Maximize storage space by eliminating unnecessary aisle space. Contact Customer Service for design planning assistance with high-density systems.



## Overhead Track High-Density Systems

Meet the broad needs of central supply areas and sterile processing departments. The units' dust-free design is ideal for supplies and equipment that are:

- Simple installation; doesn't require drilling or bolting to the floor
- Stainless steel guide bars, polyurethane guide blocks, and 5" polyurethane rigid casters with tie bars provide smooth and easy movement
- Design prevents dirt and debris buildup
- Cost-efficient, high quality



## Floor Track High-Density Systems

The floor track system can be specified to match the application or need. The standard v-groove option is suitable for most applications; the in-track, anti-tip option offers improved stability; and the flat-track mechanical-assist option supports heavy or wide systems.

- Mount one, two, or four shelving units onto one aluminum carriage with corner wheel assemblies
- Allows staff to easily move entire shelving units along a v-groove floor track
- Carriage wheels reduce friction and provide positive carriage retention
- Low profile, ADA-compliant track

# Quick Wire Catalog

*Storage Solutions for Healthcare*



Evolve Cabinets | Evolve Casework | Roam Supply Carts | Rover Workstations | Tempo Procedure Carts | Quick Open Storage

Solaire Medical specializes in storage solutions for all areas of your healthcare facilities. We offer the InnerSpace® portfolio of products, a cohesive system of carts, cabinets, and modular casework that improves staff and facility efficiency and an organization's bottom line. Our InnerSpace portfolio is supplemented with the Quick line of open storage products.

When you purchase InnerSpace by Solaire Medical products, you're buying products made in the U.S.A. and from a direct manufacturer that delivers on-time and error-free. The portfolio's 5-year warranty is our promise to you that our products and service are of the highest quality.

The Quick family of open storage products has a one-year warranty.

Contact our service team with your requests or to connect with a sales representative. We're here to help you specify the best storage products for your needs, whether a standard option or customized solution. We offer complimentary storage analysis, design services, CAD support, and logistics and installation assistance.

Call to schedule a free storage consultation.

**solaire**  
MEDICAL

Solaire Medical | P.O. Box 2808 | Grand Rapids, Michigan 49501  
888-435-2256 phone | 616-743-5944 fax | [solaireshmedical.com](http://solaireshmedical.com)

© 2019 Solaire Medical, Grand Rapids, MI 49501  
© InnerSpace is a registered trademark of Solaire Medical, Grand Rapids, MI 49501  
0319



**InnerSpace**  
PORTFOLIO OF PRODUCTS