

PH-59 | 41924-000

CT-DI Phantom (Head and Body Phantom)



A set of phantoms for CTDI-100, conforming to requirements described in 21 CFR 1020.33, IEC 61223-3-5: 2004, and IEC 61223-2-6: 2006 as consistency test



A set with different type of tissue substitute can be custom-ordered



FEATURES

| Represent adult head and body as well as pediatric body

Evaluation Parameters

| Computed Tomography Dose Index (CTDI)
| Dose profile

DESCRIPTIONS

SET INCLUDES

- 1 head phantom
- 1 body phantom
- 10 filling rods manual

SPECIFICATIONS

Phantom size:
Body phantom: 32 dia. x 15 cm / 12.6 dia. x 5.9 in
Head phantom: 16 dia. x 15 cm/ 6.3 dia. x 5.9 in

Phantom weight:
15kg/ 33lb
4kg/ 8.8lb

MATERIALS

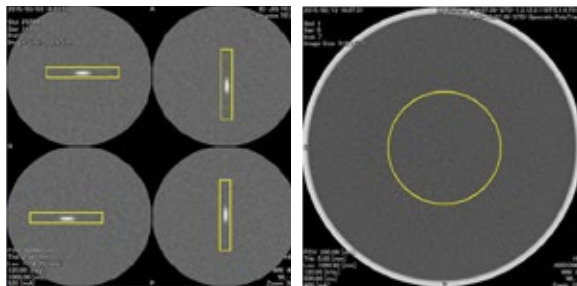
Acrylic resin

PH-54 | 41919-000

CT QA Phantom JCT II



Renovated CT QA phantom for initial test at the time of reception, as well as follow-up periodical quality check of CT scanners



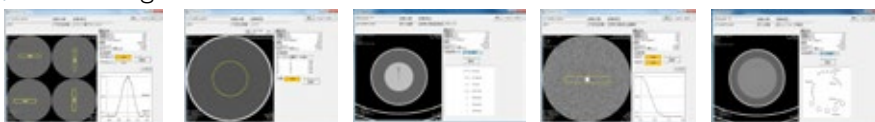
FEATURES

| The phantom can be used for initial and follow-up QA tests listed below, described in JIS Z 4752-3-5: 2008 (IEC 61223-3-5: 2004) and Z 4752-2-6: 2012 (IEC 61223-2-6: 2006)
| Conforming to JIS Z 4923:2015

EVALUATION PARAMETERS

| Axial scan:
Slice thickness/ spatial resolution/
low contrast resolution/ noise/ mean HU number/ uniformity

| Helical scan:
Slice thickness



*System requirements of software : OS Windows 7 (64 bit), Windows 8.1 Pro (64 bit), memory 4GB, HDD 250 GB

DESCRIPTIONS

SET INCLUDES

- | | | |
|--|---|------------------------|
| 1 cylindrical container (fixing screw) | 1 low contrast resolution unit | 1 phillips screwdriver |
| 1 slice thickness unit (axial) | 2 slice thickness unit (helical) | 1 vaseline |
| 1 spatial resolution unit | 1 fixture for the slice thick ness unit | 1 screws (spare) |
| 1 repeated pattern unit | 1 fixture for the cylindrical container | 1 manual |

SPECIFICATIONS

Phantom size:
20 dia. x 20 cm/ 7.9 dia. x 7.9 in

Phantom weight:
3 kg/ 6.6 lb

MATERIALS

Acrylic resin, polyurethane, stainless