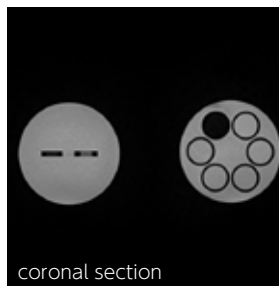


PH-72 | 41936-000

MRI Breast QA phantom



An innovative phantom with shape of breasts for detailed QA in Breast MRI



FEATURES

APPLICATIONS

- Quantitative evaluation of Breast MRI with breast coils
- Adjustable height of the phantoms in the range of 10cm to fit the depth of the coils
- Horizontal position of the phantoms can be set arbitrarily on the 30cm length slit

| MRI

DESCRIPTIONS

TEST SUMMARY

SET INCLUDES

- 2 breast MRI evaluation unit (2 types, 1 each)
- 1 adjustment bolts
- 1 supporting plate
- 1 storage case

MATERIALS

Acrylic resin

SPECIFICATIONS

Phantom dimensions: 30 x 40 x 26 cm, 5kg
11.8 x 15.7 x 10.2 in, 11 lb

TEST SUMMARY

- Spatial resolution
- Quantitative evaluation of ADC on test pieces of tissue substitute

PH-33 | 41330-010

MRI Head Phantom NH



Life-size head phantom to assess uniformity



APPLICATIONS

| MRI | SPECT/ CT
| CT

DESCRIPTIONS

SET INCLUDES

- 1 head phantom
- 1 nickel chloride solution
- 1 spout
- 1 storage case
- manual

MATERIALS

Acrylic resin

COMPLIES WITH

JIS Z 4924

SPECIFICATIONS

Phantom size:
W17 x D22 x H30 cm
W6.7 x D8.6 x H11.8 in

PH-34 | 41501-000

MRI/NM Head Phantom BHC



Simulate life-size head images in MRI and NM



APPLICATIONS

| MRI | SPECT/ CT
| CT

DESCRIPTIONS

SET INCLUDES

- 1 head phantom
- 2 simulated tumor
- 1 nickel chloride solution
- 1 storage case

SPECIFICATIONS

Phantom height:
33 cm/ 12.9 in

