

## Code Number

41301-300 Two-way set

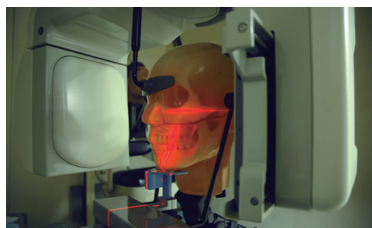
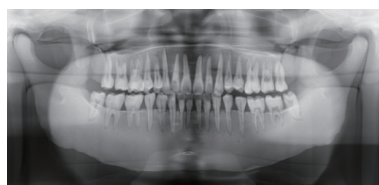
41301-500 Mouth closed

41301-400 Mouth open



Mouth closed

Mouth open



## Set includes (per set)

Main head unit Tripod  
 Upper jaw 1 set of sample X-ray  
 Lower jaw\* data Storage case  
 Tongue Instruction manual  
 Fixation base (including screws)  
 \*Two-way set includes two types of lower jaws

## Features

- ☐ Can be chosen between mouth closed/open and Full set
- ☐ Each hard tissue (enamel, dentin, cortical bone and cancellous bone) has particular HU number and X-ray absorption rate.
- ☐ Jaws and tongue are detachable to allow access to the oral cavity, pharyngeal cavity and maxillary sinus. Censors, simulated lesions, or residue can be set in these cavities.
- ☐ Carotid arteries are prepared as lumens to accommodate simulated calcifications.
- ☐ Each tooth has three-layer structure of enamel, dentin and pulp cavity
- ☐ No compatibility with old version (PH-47)

## Applications

○Tooth jaw X-ray training and quality assurance technique: Panoramic X-ray, Intraoral X-ray, Dental CT, Cephalogram

## X-ray image simulation example

Change of x-ray transmission due to maxillary sinusitis, calcification of carotid artery, residue of food and drink to oral and nasal cavity due to dysphasia. (simulated food and drink not included)

## Specification



1 main head unit  
 Size : W20×D21×H29cm  
 Weight: 4.8kg/10.6 lb

## Materials:

soft tissue: urethane based resin  
 (specific gravity: 1.06), synthetic bone:  
 epoxy resin (specific gravity: 1.31)

Specifications are subject to change without prior notice.

 **KYOTO KAGAKU co.,LTD**

 <http://www.kyotokagaku.com>  
 [rw-kyoto@kyotokagaku.co.jp](mailto:rw-kyoto@kyotokagaku.co.jp)

**Hong Kong Representative Office**

Level 60, One Island East,  
 18 Westlands Road, Island East, Hong Kong

 +852-3978-1365  +852-3978-1199

**Worldwide Inquires and Ordering Head Office and Factories**

15 Kitanekeya-cho, Fushimi-ku,  
 Kyoto, 612-8388, Japan

 +81-75-605-2510  +81-75-605-2519

**European Representative Office**

De-Saint-Exupery-Str.10,  
 60549 Frankfurt, Germany

 +49-69-5060-28160  +49-69-5060-28170



All American regions  
**KYOTOKAGAKU AMERICA INC.**

 <http://www.kkamerica-inc.com/>  
 \* United States only  
 [info@kkamerica-inc.com](mailto:info@kkamerica-inc.com)

3109 Lomita Boulevard, Torrance,  
 CA 90505-5108, USA

 +1-310-325-8860

 +1-310-325-8867