

PH-46 | 41362-000

CT Prostate Phantom



Excellent phantom for therapy planning of prostate cancer



SHOW MORE!



FEATURES

- | For alignment in Image Guided Radiation Therapy (IGRT)
- | Organs with close-to-human HU facilitate training in CT scanning

APPLICATIONS

| CT and Corn beam CT

| organs | HU at 80KeV |
|---------------------|-------------|
| Prostate | 50 |
| Seminal vesicles | 25 |
| Bladder surface | 30 |
| Bladder inside | 10 |
| Rectal surface | 70 |
| Rectal inner cavity | -800 |

ANATOMY

- | Prostate, urinal bladder with simulated internal fluid, seminal vesicles and rectum
- | Bones: L3,L4 and L5, pelvis and femurs (partial)

DESCRIPTIONS

SET INCLUDES

- 1 phantom
- 1 set of sample X-ray data (DVD)
- 1 storage case
- 1 manual

MATERIALS

Soft tissue: urethane resin (specific gravity: 1.06)
 Synthetic bone: epoxy resin (specific gravity: 1.31)

SPECIFICATIONS

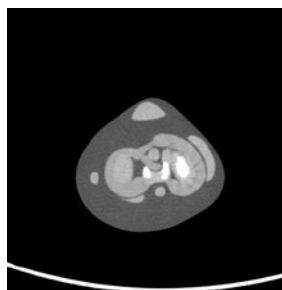
Phantom height: 35 cm/ 13.7 in Packing size: W44 x D39 x H42 cm/ W17.3 x D15.3 x H16.5 in Packing weight: 27 kg/ 59.5 lb

PH-71 | 41935-000

Knee Ligament Phantom



Detailed knee anatomy with HU of each bone, cartilage, and ligament



SHOW MORE!



FEATURES

- | Anthropomorphic knee phantom that allows visualization of ligaments and cartilage
- | Close-to-human radiation absorption and HU for each anatomical structure as well as realistic artifacts

APPLICATIONS

| Plain X-ray
 | CT

ANATOMY

femur/ tibia/ fibula/ patella/ articular cartilage of patella/ meniscus/ cruciate ligament/ medial collateral ligament/ fibular collateral ligament/ articular cartilage

DESCRIPTIONS

SET INCLUDES

- 1 knee phantom
- 1 storage case
- 1 manual

MATERIALS

Soft tissue: urethane based resin (specific gravity: 1.06)
 Synthetic bone: epoxy resin (specific gravity: 1.31)

SPECIFICATIONS

Phantom size: 14 dia. x 45(H) cm / 5.5 dia. x 17.7(H) in Phantom weight: 4.5 kg/ 10 lb

