

CT prostate phantom specifications

● Specifications

CT prostate phantom 1
 Instruction manual 1

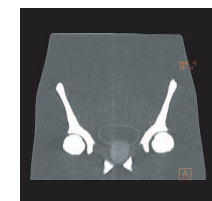
This phantom is made of KYOTO KAGAKU original soft tissue substitute and synthetic tissue that have close-to-human radiation absorption rate.

CT images with true-to-life contrast and artifacts can be acquired. The phantom represents internal anatomy of male pelvis, with appropriate HU numbers. *The spongy bone is not represented.



⚠ CAUTION	
<ul style="list-style-type: none"> ● Handle with care The models consists of special compositions of resin. Please handle them with the utmost care at all times. 	<ul style="list-style-type: none"> ● Even if color on its surface might be changed across the ages, this does not affect the quality of its performance.
<ul style="list-style-type: none"> ● Storage Store model at room temperature, away from shock, heat, moisture and direct sunlight. 	<ul style="list-style-type: none"> ● Don't mark on the models with pen or leave any printed materials in contact with their surface. Ink marks on the models are not removable.

- Shapes: lower abdomen shape
 - Size: About 350mm in full length
 - Organs: A prostate, a bladder (Surface and internal water), a seminal vesicle, and rectum(inner cavity)
 - Bone Frame: L3, L4, and L5 lumbar vertebrae, a pelvis, upper parts of femurs
 - Materials: Soft tissue part polyurethane resin, hydroxyapatite Skeleton epoxys
 - CT Values of organs
 - Prostate HU50
 - Seminal vesicles HU25
 - Bladder surface HU 30, Inside HU10
 - Rectal surface HU70, Inner cavity HU -800 (urethane form)
- *CT values are deduced with calculated value of 80KeV.



■ Head Office and Factory

Kyoto Kagaku Co. Ltd.
 15 KitaneKoya-cho, Fushimi-ku
 Kyoto, 612-8388 Japan
 Telephone : +81-75-605-2510
 Facsimile : +81-75-605-2519

■ LA Office (for USA, CANADA and Mexico customers)

Kyoto Kagaku Co., Ltd. USA Office
 3109 Lomita Boulevard, Torrance, CA 90505-5108, USA
 Telephone : +1-310-325-8860
 Facsimile : +1-310-325-8867